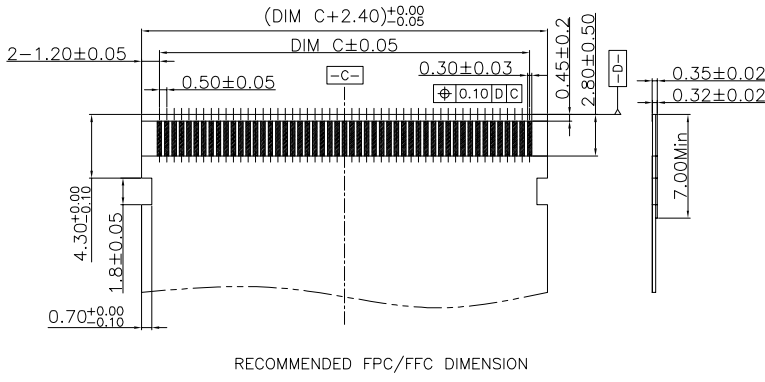
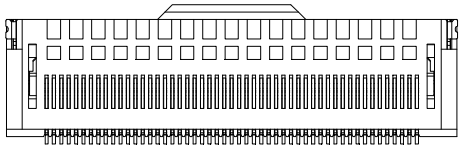
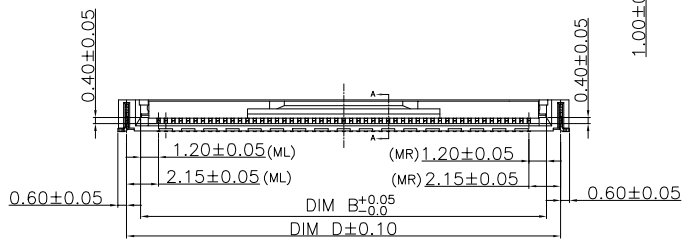
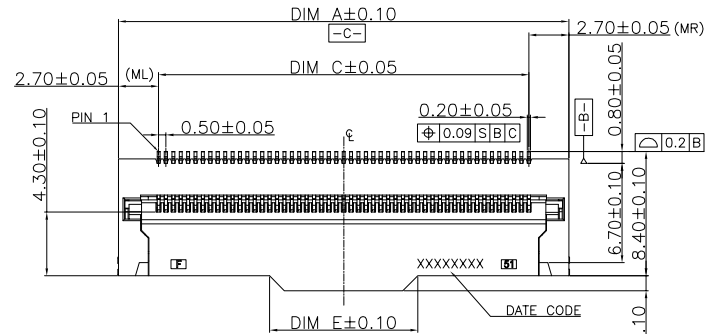
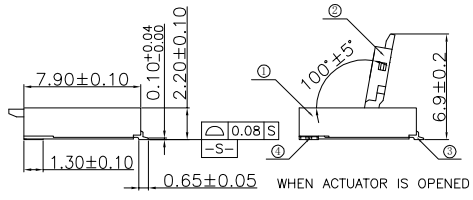
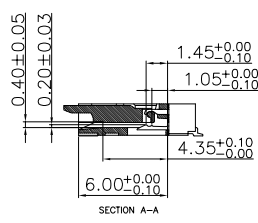
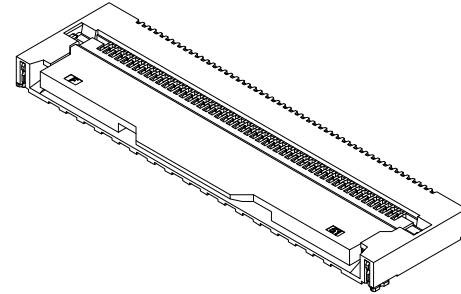


The product using material and processing must conform to the "WL-PZ-001" HSF technical standard control requirements

RoHS+HF

- NOTE:
- MATERIAL SPECIFICATION:
 - HOUSING: LCP,UL94V-0,NATURE
 - CONTACTS: PHOSPHOR BRONZE
 - SOLDER TABS: PHOSPHOR BRONZE
 - COVER:LCP,UL94V-0,BLACK
 - PLATING SPECIFICATION:
 - CONTACTS: Gold flash on contact area and solder area.
 - SOLDER TABS: MATTE Tin 120~240u" PLATED OVER ALL.
 - MECHANICAL PERFORMANCE:
 - RETENTIVITY FORCE: 5.35kgf min(96PIN)
 - DURABILITY: 30 CYCLES.
 - ELECTRICAL PERFORMANCE:
 - CURRENT RATING: 0.5A AC/DC
RATED VOLTAGE : 50V AC/DC
 - CONTACT RESISTANCE: 30 mΩ MAX
 - INSULATION RESISTANCE: 100MΩ Min
 - DIELECTRIC WITHSTANDING : 250V
 - ENVIRONMENTAL PERFORMANCE:
 - OPERATING TEMPERATURE: -40°C~+105°C.
 - PACKAGE SPEC: REEL



F0501 22 F 9-1 XX 2 X X 01

SERIES NO: _____

HEIGHT: 22: 2.2mm

MALE FEMALE: _____

F-FEMALE

ANGLE: 9-90°

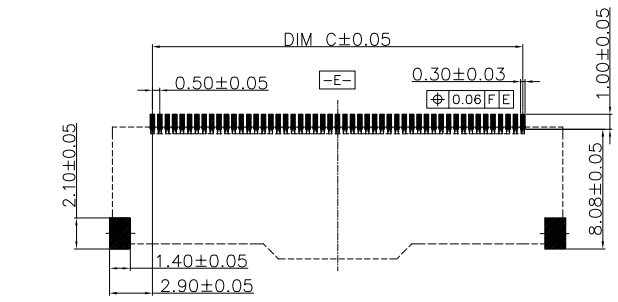
ROW NO: 1-SINGLE ROW

COLOR: M-BEIGE, K-WHITE, S-NATURE

PLATING: A-ALL AU G/F, D-MATTE Tin, C-BRIGHE TIN


TERMIPOINT: 2-SMT

PIN Q'PY: 04~40



Ordering Information & Dimensions

Circuit	Dimensions(mm)				
	A	B	C	D	E
24	16.90	13.90	11.50	15.80	9.00
51	30.40	27.40	25.00	29.30	10.00
96	52.90	49.90	47.50	51.80	10.00

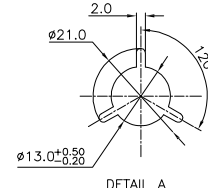
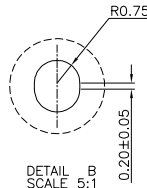
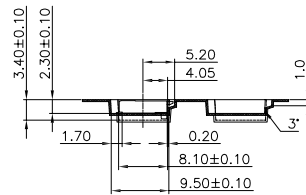
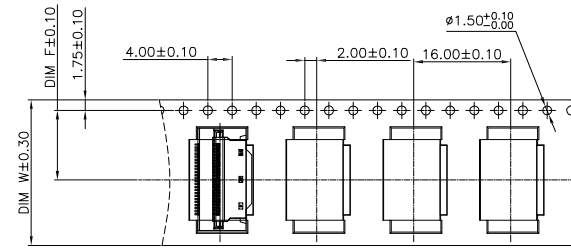
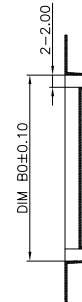
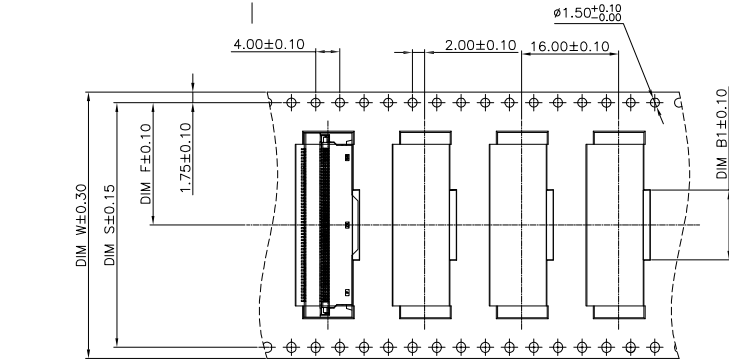
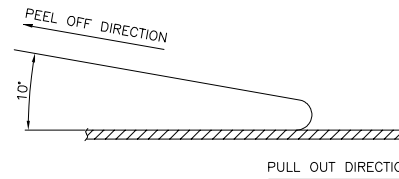
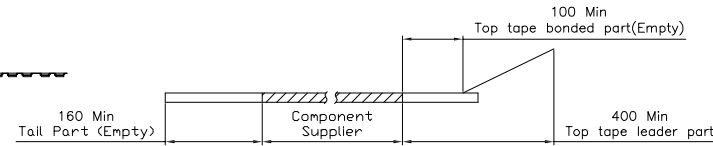
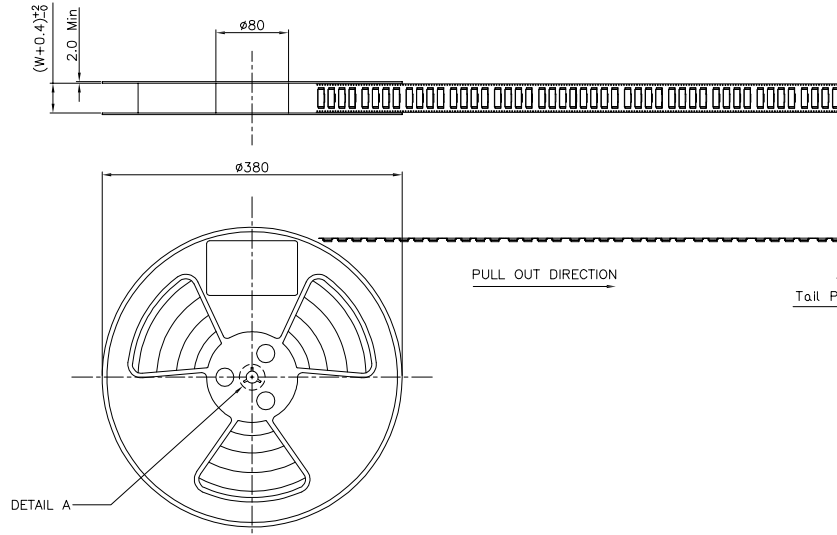
REV.	REVISION RECORD	DATE	GENERAL TOLERANCES		SCALE: 1:1	NAME	DATE	PART.NO:	DWG.NO:	 WanLian Teconology Co., Ltd
AO	NEW RELEASE	22.09.08	LINEAR	ANGLES	APPROVED	Wang_jr	22.09.08	F050122F9-1XX2XX01	ENDE05	
			0.0±0.35	X'REF±6°	DESIGNER	Han_Gao	22.09.08	TITLE:		
			UNIT:mm	X'±3°	DRAWN	LanXuan_Hou	22.09.08	Pitch 0.50mm H2.2mm卧贴前掀盖下接触 FPC		REV: A0 SHEET: 1/2
			SIZE: A4	0.000±0.10						

The product using material and processing must conform to the "WL-PZ-001" HSF technical standard control requirements

RoHS+HF

NOTES:

1. 10 SPROCKET HOLE PITCH CUMULATIVE TOLERANCE. $\pm 0.20\text{mm}$
2. CARRIER CAMBER NOT TO EXCEED 1mm IN 250mm.
3. ALL DIMENSIONS MEET EIA-481-C REQUIREMENTS.
4. MATERIAL: WHITE ANTI-STATIC POLYSTYRENE.
5. THICKNESS: $0.30 \pm 0.05\text{ mm}$.
6. PACKING LENGTH PER 15" REEL : 24.80METERS.
7. COMPONENT LOAD PER 15" REEL : 1500PCS.
8. PEELING OFF FORCE OF TOP TAPE 0.1N~0.7N(10.2gf~71.4gf).



Ordering Information & Dimensions

Circuit	Dimensions(mm)				
	B0	B1	C	S	F
24	17.20	11.50	24.00		11.50
51	30.70	11.50	44.00	40.40	20.20
96	53.20	11.50	72.00	68.40	34.20

REV.	REVISION RECORD	DATE	GENERAL TOLERANCES		SCALE:	NAME	DATE	PART.NO:	DWG.NO:	 WanLian Teconology Co., Ltd	
A0	NEW RELEASE	22.09.08	LINEAR	ANGLES	1:1			F050122F9-1XX2XX01	ENDE05		
			0.0±0.35	X'REF±6'	APPROVED	Wang_jr	22.09.08				
			0.00±0.25	X'±3'	DESIGNER	Han_Gao	22.09.08	TITLE:			
			UNIT:mm	X'X' ±2'	DRAWN	LanXuan_Hou	22.09.08	Pitch 0.50mm H2.2mm卧贴前掀盖下接触 FPC		REV: A0	SHEET: 2/2